

**A SELF-GUIDED TOUR OF
SUDDEN OAK DEATH (*Phytophthora ramorum*)
ALONG THE BIG SUR COAST
MONTEREY COUNTY, CA**



Left: View Sudden Oak Death from Hwy 1 at Torres Canyon. Right: Opening along Pfeiffer Falls Trail, caused by *Phytophthora ramorum*. Photos: S. Frankel, USDA-FS.

Tour Overview. This tour starts at the Marriott Hotel in Monterey and provides a few trails and viewpoints to see symptoms of Sudden Oak Death (*Phytophthora ramorum*) in the Big Sur area (approximately 25 miles south of Monterey along Hwy 1). The tour will require private transportation and can be done in as little as 3 hours, but a minimum 4 hours is recommended. While touring, keep in mind that *P. ramorum* is a quarantine organism, so plant material and soil should not be collected. Inadvertent movement of soil should be mitigated by thorough cleaning of muddy shoes and vehicles prior to leaving the area (see sanitation measures pg. 4).

TRIP PREPARATIONS

Weather - The weather in January along the Big Sur Coast is unpredictable. On average, highs are in the 60° F range and lows in the 40° range. Layers of clothes are recommended. If the weather becomes stormy, this tour should not be



THE SUDDEN OAK DEATH SCIENCE SYMPOSIUM II, Jan. 18-21, 2005

attempted due to danger of being hit by falling *P. ramorum*-infested trees and the increased risk of spreading the pathogen.

Sight-seeing information - Touring information for Big Sur is available at: <http://jrabold.net/bigsur/>. The Big Sur coast is exceptionally scenic; if possible, allow enough time to enjoy the ocean, beaches, waterfalls, and redwood forests. Tour maps can be found online at: <http://www.bigsurcalifornia.org/map.html>.

Food and other services. Basic services (except for cell phone coverage) are available in the Big Sur area. The post office and general store are located along Hwy 1 a few miles south of Pfeiffer Big Sur State Park. The Big Sur Center Deli (831/667-2225) at the Post Office Center sells very good sandwiches, and several Big Sur resorts have outstanding restaurants (see <http://www.bigsurcalifornia.org/restaurants.html>). We suggest you call ahead since some restaurants close for the winter.

WHERE TO GO TO SEE SUDDEN OAK DEATH (*Phytophthora ramorum*)

#1 Point of Interest - Pfeiffer Big Sur State Park

The most accessible *P. ramorum* symptoms can be seen at Pfeiffer Big Sur State Park, located approximately 30 miles south of Monterey, just off of Hwy 1. To get to the park, take Hwy 1 south (see pg. 5 for directions). At the park, leave your car in the Big Sur Lodge parking lot and follow the signs to the Pfeiffer Falls Trail.

Pfeiffer Falls Trail: Many dead and dying tanoaks can be seen along the trail. *P. ramorum* has been attacking these trees for many years, so many have died and broken off near their bases, creating openings in the forest canopy. The hike to the top of the falls is an easy 1.4-mile round trip. The trail goes through a redwood forest with a tanoak understory. California bay laurel are present with characteristic necrotic leaf tips caused by *P. ramorum*. The first find of *P. ramorum* on redwood was made along this trail in 2001.

The Valley View and Oak Grove Trails intersect the Pfeiffer Falls Trail. If you have more time and energy, these trails will expose you to more symptomatic trees. Be sure to look closely at green coast live oak and tanoak along the trails for active bleeding. Look for stumps and other evidence of removed *P. ramorum*-infected trees near park cabins and the Big Sur Lodge area.



THE SUDDEN OAK DEATH SCIENCE SYMPOSIUM II, Jan. 18-21, 2005

Valley View Trail: an easy 2-mile round trip hike from the trailhead, or 1/2 mile from Pfeiffer Falls; beautiful views of Point Sur and the Big Sur Valley can be seen.

Oak Grove Trail: an easy to moderate 3-mile round trip hike from the Big Sur Lodge; a variety of ecosystems, such as redwood groves, open oak woodlands, and dry chaparral can be observed.

Buzzard's Roost: a moderate 4.8-mile round trip loop; experience shady redwoods, followed by tanoak and CA bay laurel trees, and peaking at Pfeiffer Ridge with beautiful coastal views (see map on page 7).

Park Information: http://www.parks.ca.gov/default.asp?page_id=570)

Map: http://www.parks.ca.gov/lat_long_map/default.asp?lvl_id=209

#2 Point of Interest - Vistas of Sudden Oak Death

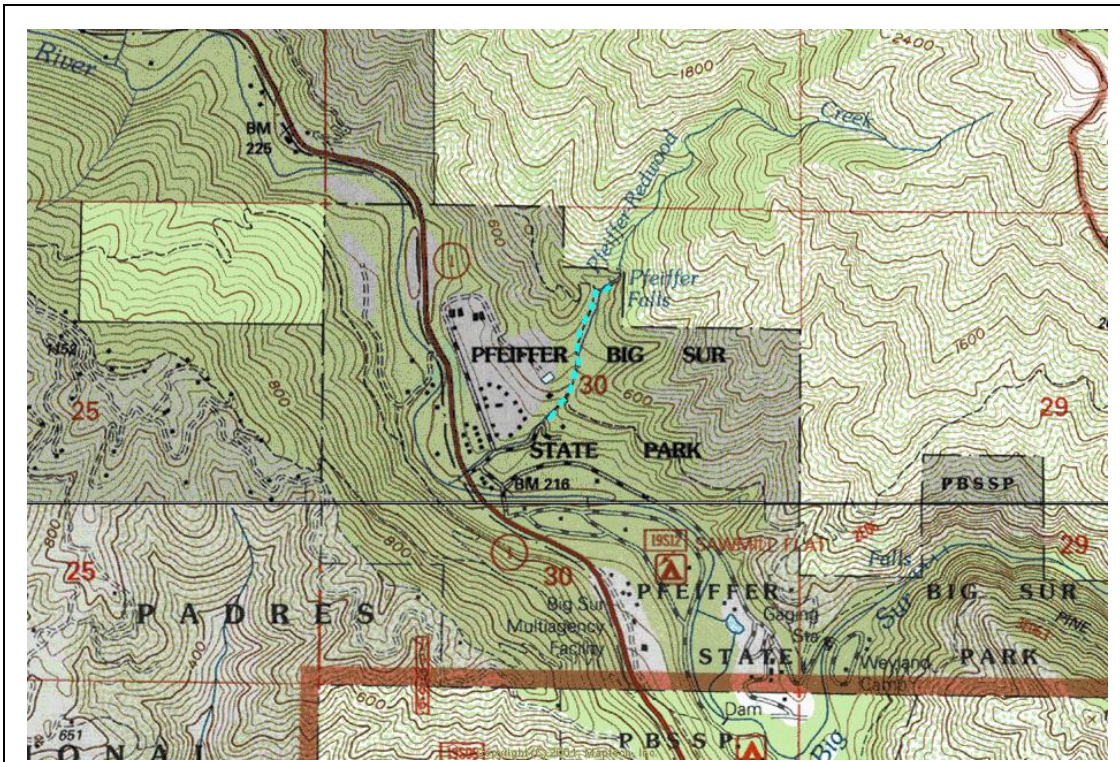
After your hike, exit Pfeiffer Big Sur State Park and drive south on Hwy 1 to Julia Pfeiffer Burns State Park and beyond. Look up at the canyons to view tanoaks killed by *P. ramorum*. Castro, Grimes, Partington, and other canyons are heavily infested. Carefully pull over at turnouts near canyon overpasses and park your car. Walk along the highway where it crosses canyons to view Sudden Oak Death on tanoaks below and above the highway.

The southern most detection of *P. ramorum* is near Plaskett Creek, approximately 30 miles south of Pfeiffer Big Sur State Park, in areas that aren't easily accessible and can't be seen from the highway.

#3 Point of Interest (Optional – For the Ambitious) - Julia Pfeiffer Burns SP

The Tanbark Trail is on the east side of Hwy 1 where it crosses Partington Creek in Julia Pfeiffer Burns State Park. It begins with an easy ascent beneath redwoods along Partington Creek and continues along the canyon wall to historic Swiss Camp. This forested glade makes a good resting spot. Beyond Swiss Camp, the trail climbs gently through a mixed forest once again before descending to its terminus at the upper end of the fire road leading to the Tin House (just over 3 miles from the trailhead). A loop trip can be made by descending a steep 2 miles down the fire road back to Hwy 1, approximately 1 mile south of the Tanbark trailhead, where you can walk back along the highway to your car (see area map on page 7).





Trail to Pfeiffer Falls, Pfeiffer Big Sur State Park

SANITATION AND QUARANTINE INFORMATION

Do not collect any plant material or soil. Do not use pocket knives or other tools to examine plants. Stay on trails.

Avoid mud whenever possible. Clean soil off of shoes upon the completion of your trip. Shoes may be cleaned further with soap and water to insure the removal of any pathogen-harboring material. Visit the CA Oak Mortality Task Force booth during the symposium to spray Lysol® on your shoes as an extra precaution.

If your vehicle does get muddy, visit the El Estero Hand Car Wash to remove any pathogen-harboring material that may be caught in the tires or undercarriage (see directions on pg. 6).



DRIVING DIRECTIONS

Monterey Marriott Hotel (831/649-4234) to Pfeiffer Big Sur State Park

- Start out going SOUTH on CALLE PRINCIPAL toward W. FRANKLIN ST.
- Turn LEFT onto W. FRANKLIN ST.
- Turn RIGHT onto WASHINGTON ST.
- WASHINGTON ST. becomes ABREGO ST.
- ABREGO ST. becomes MUNRAS AVE.
- Merge onto CA-1 SOUTH
- The PFEIFFER BIG SUR STATE PARK entrance will be on the left. Follow the signs to the Big Sur Lodge parking lot. (47225 Highway 1, Big Sur)

Pfeiffer Big Sur State Park to the Monterey Marriott Hotel

- Go NORTH on CA-1 N/CABRILLO HWY. Continue to follow CA-1 N.
- Take the exit toward MONTEREY
- Merge onto MUNRAS AVE.
- Turn SLIGHT LEFT to stay on MUNRAS AVE.
- Turn SLIGHT LEFT onto W. PEARL ST.
- Turn RIGHT onto CALLE PRINCIPAL.
- End at the MARRIOTT HOTEL (350 Calle Principal, Monterey)

Map of the Big Sur Coast

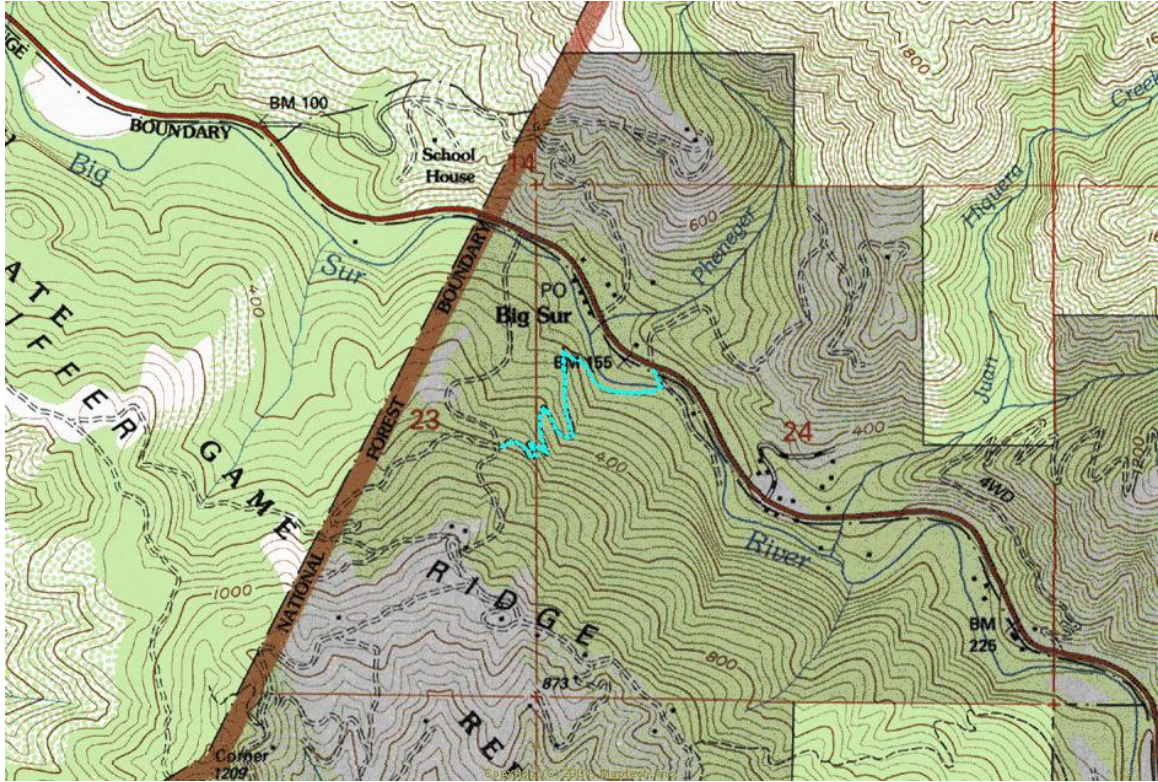


El Estero Car Wash (831/373-1801) from the Monterey Marriott Hotel

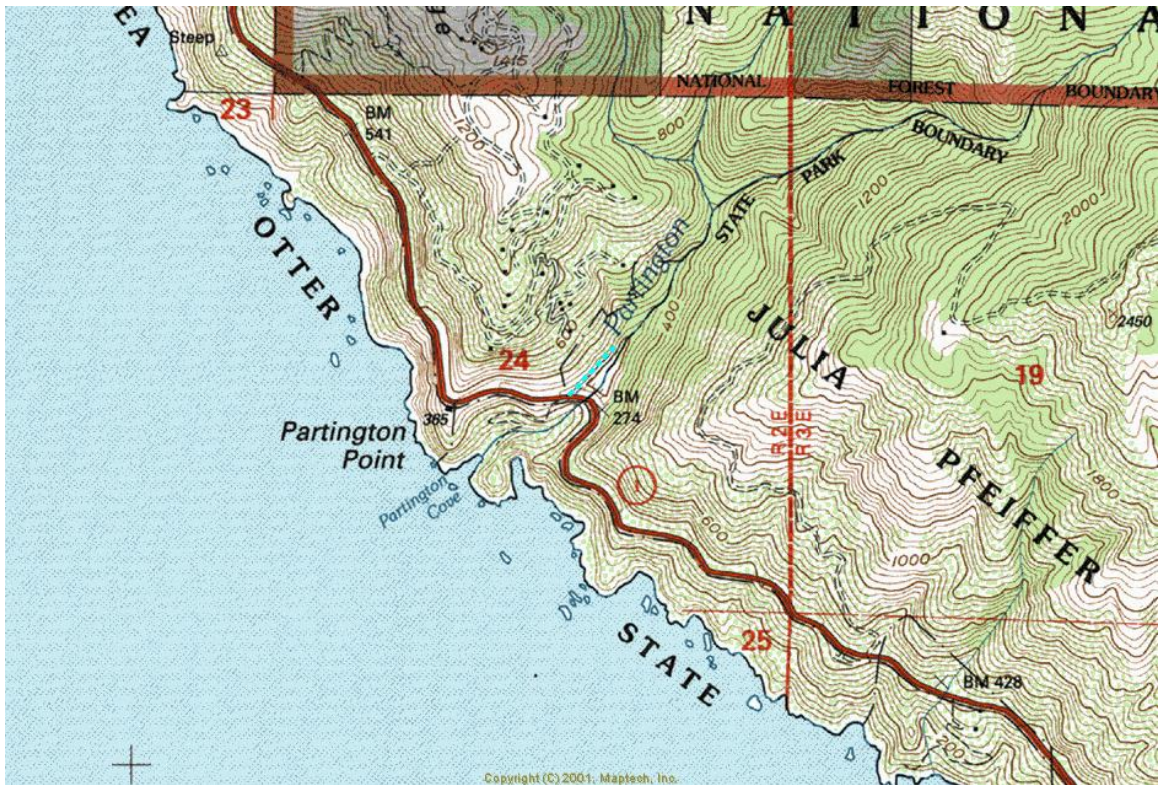
- Start out going SOUTH on CALLE PRINCIPAL toward W. FRANKLIN ST.
- Turn LEFT onto W. FRANKLIN ST.
- Turn RIGHT onto WASHINGTON ST.
- WASHINGTON ST. becomes ABREGO ST.
- Turn LEFT onto FREMONT ST.
- End at the El Estero Car Wash (590 Fremont St., Monterey, CA 93940-3216)



THE SUDDEN OAK DEATH SCIENCE SYMPOSIUM II, Jan. 18-21, 2005



Map for Buzzard's Roost Trail. Notation of trail is not exact.



Map of Partington Canyon area with approximate location of Tanbark trial.

